

FOR SALE

Ready
to
Move In



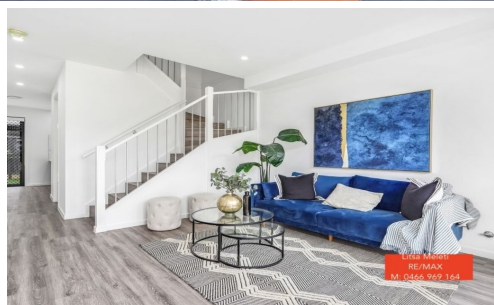
Litsa Meleti
RE/MAX
M: 0466 969 164



GROUND FLOOR PLAN



FIRST FLOOR PLAN



Litsa Meleti
RE/MAX
M: 0466 969 164



Litsa Meleti
RE/MAX
M: 0466 969 164

lot 43 Badger Glade, Marsden Park



REMAX is excited to present this family residence to the market. Centrally located in the sort stroll drive to the school, shops multiple amenities, parks, bus stops, and upcoming train station. This family home has charm and character, be the first to express your interest. In a prime location, it doesn't get better than this.

Prices starting from \$750,000 for 2 bedrooms

Other suburbs available:

- Riverstone
- Pendle Hill
- North Kellyville

Inclusions:

- Kitchen with Stone benchtop & stainless steel appliances including a dishwasher, gas cooktop, rangehood, and Oven
- Ensuite & main bathroom with full-height tiling
- Built in robe to bedrooms
- Builders range Hybrid Flooring to Kitchen, Living, Dining, Hallway & Bedrooms
- Semi framed mirrored sliding doors to wardrobes including internal shelves with hanging rail
- LED downlights
- Video Intercom
- Fully alarmed
- Ducted Air-Conditioning
- Built-in robes with a mirror finish
- Gas hot water system, window furnishings
- Landscaped gardens and fencing
- Concrete driveway, letterbox, smoke detectors, turf
- Letterbox

For inspection and more details please get in touch Litsa on 0466 969 164.

Evening viewings available after 6pm.

Disclaimer: The above information is believed to be correct and accurate, however, RE/MAX does not guarantee its accuracy and we urge prospective buyers to make their own enquiries if

Price: JUST LISTED - TOWNHOUSE - READY TO MOVE IN

View: remax.com.au/property-details/21252596

Litsa Meleti

M 0466 969 164

**RE/MAX Lifestyle Marketing,
Penrith**

<http://www.remax-lifestylemarketing.com.au>

Each office independently owned and operated

Penrith, NSW, 2750

OFFICE 0428934618